



Electric-Field-Induced Skyrmion Distortion and Giant Lattice Rotation in the Magnetoelectric Insulator Cu_2OSeO_3

J. S. White,^{1,2,*} K. Prša,¹ P. Huang,¹ A. A. Omrani,¹ I. Živković,³ M. Bartkowiak,⁴ H. Berger,⁵ A. Magrez,⁵

J. L. Gavilano,² G. Nagy,² J. Zang,^{6,†} and H. M. Rønnow^{1,‡}

¹Laboratory for Quantum Magnetism, Ecole Polytechnique Fédérale de Lausanne (EPFL), CH-1015 Lausanne, Switzerland

²Laboratory for Neutron Scattering and Imaging, Paul Scherrer Institut, CH-5232 Villigen, Switzerland

³Institute of Physics, Bijenička 46, HR-10000 Zagreb, Croatia

⁴Laboratory for Developments and Methods, Paul Scherrer Institut, CH-5232 Villigen, Switzerland

⁵Crystal Growth Facility, Ecole Polytechnique Fédérale de Lausanne (EPFL), CH-1015 Lausanne, Switzerland

⁶Department of Physics and Astronomy, Johns Hopkins University, Baltimore, Maryland 21218, USA

(Received 28 May 2014; published 4 September 2014)

Uniquely in Cu_2OSeO_3 , the Skyrmions, which are topologically protected magnetic spin vortexlike objects, display a magnetoelectric coupling and can be manipulated by externally applied electric (E) fields. Here, we explore the E -field coupling to the magnetoelectric Skyrmion lattice phase, and study the response using neutron scattering. Giant E -field induced rotations of the Skyrmion lattice are achieved that span a range of $\sim 25^\circ$. Supporting calculations show that an E -field-induced Skyrmion distortion lies behind the lattice rotation. Overall, we present a new approach to Skyrmion control that makes no use of spin-transfer torques due to currents of either electrons or magnons.

DOI: 10.1103/PhysRevLett.113.107203

PACS numbers: 75.25.-j, 75.50.Gg, 75.85.+t, 77.80.-e

Skyrmions are magnetic spin vortexlike objects that can be stabilized in chiral magnets with Dzyaloshinskii-Moriya (DM) interactions. Because of their topological property [1,2], nanometric size (~ 10 – 100 nm) [2], observation close to room temperature (T) [3,4], and conduction electron-driven motion [5–7], Skyrmions are outstanding candidate components for new spin-based applications.

Materials that display Skyrmions range from itinerant MnSi [1,8], $\text{Mn}_{1-x}\text{Fe}_x(\text{Si}, \text{Ge})$ [9,10], and FeGe [4], to semiconducting $\text{Fe}_{1-x}\text{Co}_x\text{Si}$ [11], and insulating Cu_2OSeO_3 [12,13]. All have the chiral-cubic space group $P2_13$, a weak magnetocrystalline anisotropy, and common phase diagrams with a helimagnetic ground state. Despite these similarities, the diverse transport properties lead to material specific mechanisms for Skyrmion manipulation and the associated dynamics. In the well-studied itinerant compounds, spin-transfer torques (STTs) exerted by the conduction electrons of an ultralow current density, $j \lesssim 10^6$ A·m⁻² drive the Skyrmion motion [5,14–19]. More generally, in both MnSi and insulating Cu_2OSeO_3 , Skyrmion lattice (SKL) rotations are observed to be driven by STTs exerted by the magnon currents induced by a thermal gradient [20]. Even though electric currents and thermal gradients have been established to generate Skyrmion motion, it remains vital to find new control mechanisms which may lead to further efficient Skyrmion-based functionalities.

In the insulating SKL host compounds, the chiral lattice promotes a magnetoelectric (ME) coupling between electric (E) and magnetic orders which can be expected to lie at the heart of new Skyrmion control paradigms. The use of ME coupling for Skyrmion manipulation is also attractive

for applications since losses due to Joule heating are negligible. Presently, however, open questions remain concerning the basic understanding of how an applied E field can manipulate the Skyrmion spin texture. To address this issue, we have used small-angle neutron scattering (SANS) to study the giant E -field-induced SKL rotations generated in a bulk sample of ME Cu_2OSeO_3 . Surprisingly, the rotations saturate at an angle dependent on both the size and sign of the E field. With supporting calculations, we explain our observations, and show that an E -field-induced Skyrmion distortion leads to the observed rotations. This amounts to a new approach for Skyrmion control that does not require STTs.

In Cu_2OSeO_3 , the ME coupling exists in all magnetic phases [12,21–28], and is generated by the d - p hybridization mechanism [12,24,29,30]. This mechanism dictates a particular ME coupling anisotropy; for a magnetic field $\mu_0 H \parallel [110]$ or $[111]$, an electric polarization P emerges $\parallel [001]$ or $[111]$, respectively [24]. In our experiments, we chose $E \parallel [111]$ (which corresponds to a negative applied voltage) or $\parallel [\bar{1} \bar{1} \bar{1}]$ (positive voltage). The direction of $\mu_0 H$ could be chosen anywhere in a horizontal plane defined by the $[1\bar{1}0]$ and $[111]$ cubic axes of the sample. This setup allowed SANS studies of two main geometries where finite ME coupling is expected, both $E \parallel \mu_0 H \parallel [111]$, and $E \parallel [111]$ with $\mu_0 H \parallel [1\bar{1}0]$. For each geometry, $\mu_0 H$ was always approximately parallel to the incident neutron beam, which allowed SANS imaging of both the SKL and zero-field phases. The SANS experiments were conducted at SINQ, Paul Scherrer Institut, Switzerland. Full details of our experiments are found in the Supplemental Material [31].

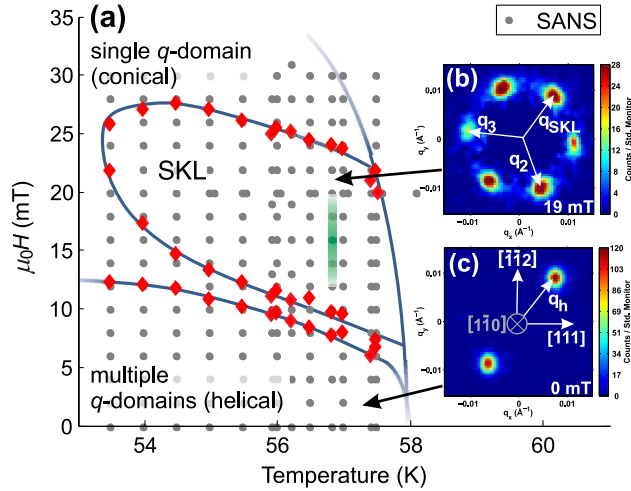


FIG. 1 (color online). (a) The high- T portion of the magnetic phase diagram of Cu_2OSeO_3 for $\mu_0 H \parallel [1\bar{1}0]$. Gray points denote where SANS measurements were done, and red diamonds the estimated locations of the phase boundaries. Similar phase diagrams are reported elsewhere (notwithstanding quantitative differences expected due to demagnetization effects) [13,24,28]. In green, we indicate the peak-to-peak range of oscillating $\mu_0 H$ where a dc E field was also applied (see text for details). (b) and (c), respectively, show typical SANS images from the SKL phase at 19 mT, and the zero-field helical phase.

Figure 1(a) shows the explored portion of the magnetic phase diagram for $\mu_0 H \parallel [1\bar{1}0]$, and for our 26 mg single crystal of Cu_2OSeO_3 . In the zero-field helical phase, we observe the expected SANS pattern with a single wave vector $\mathbf{q}_h \parallel [001]$ (note that both $\pm \mathbf{q}$ each give a Bragg spot) [Fig. 1(c)]. By applying $\mu_0 H \parallel [1\bar{1}0] = 19$ mT at 56.8 K, the SANS pattern transforms into the sixfold symmetric one expected for the triple- \mathbf{q} SKL, also with a wave vector $\mathbf{q}_{\text{SKL}} \parallel [001]$, and two further \mathbf{q} vectors at angles relative to \mathbf{q}_{SKL} of $\pm 2\pi/3$ [Fig. 1(b)]. Consistent with previous work [33], applying a dc E field within the SKL state does not discernibly alter the SKL orientation. Here, we discover that by additionally oscillating $\mu_0 H$ weakly around its mean value, a SKL rotation is generated that saturates at an angle dependent solely on the E field.

Figure 2 summarizes the E -field-induced SKL rotations generated in Cu_2OSeO_3 . Figure 2(b) shows the SKL orientation with $\mathbf{q}_{\text{SKL}} \parallel [001]$ after an initial zero-field cool from 70 to 56.8 K, followed by ramping $\mu_0 H \parallel [1\bar{1}0]$ to 16 mT. By sequentially applying an E field = $+1.89 \text{ kV} \cdot \text{mm}^{-1}$, and then 2940 triangular $\mu_0 H$ oscillations around the average 16 mT field, the SKL orientation shown in Fig. 2(a) is obtained. Here, the $\mu_0 H$ oscillations had a frequency $f = 0.05 \text{ Hz}$, and an amplitude $\Delta\mu_0 H \pm 4 \text{ mT}$ (8 mT peak-to-peak) chosen so as to always remain within the SKL phase—see the green line in Fig. 1(a). From Fig. 2(a), we find that the SKL orientation has rotated counterclockwise relative to that seen in Fig. 2(b). Repeating

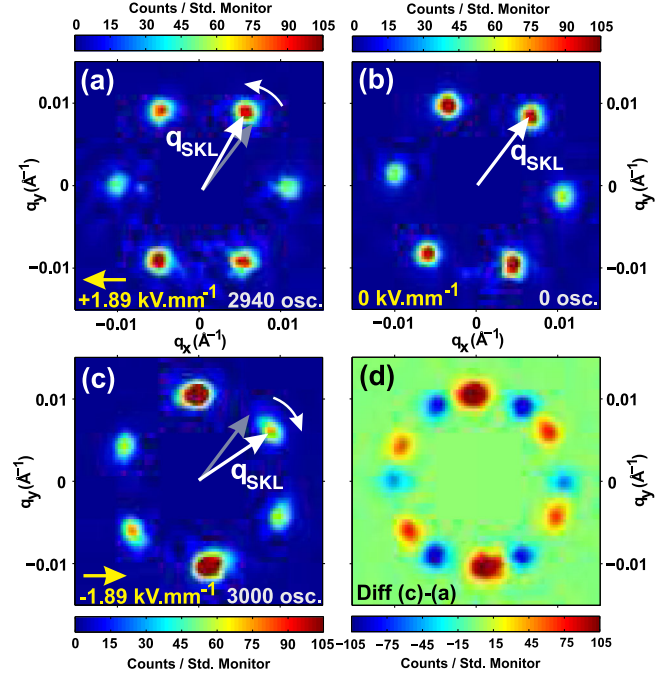


FIG. 2 (color online). SANS diffraction patterns from the SKL with the sample under (a) $E = +1.89 \text{ kV} \cdot \text{mm}^{-1}$ and after 2940 $\mu_0 H$ oscillations, (b) $E = 0$, and no $\mu_0 H$ oscillations, and (c) $E = -1.89 \text{ kV} \cdot \text{mm}^{-1}$ and after 3000 $\mu_0 H$ oscillations. All measurements were done at $T = 56.8 \text{ K}$, and with a static $\mu_0 H \parallel [1\bar{1}0] = 16 \text{ mT}$. In (a)–(c), the diffraction spots exhibit different intensities since they move at different speeds through the Bragg condition. (d) shows the foreground data of panel (a), subtracted from those of panel (c). All images correspond to views of the detector as seen from the sample.

the overall procedure except with a reversed E field of $-1.89 \text{ kV} \cdot \text{mm}^{-1}$, Fig. 2(c) shows the SKL to have rotated clockwise after 3000 oscillations. In Fig. 2(d), we emphasize the contrasting SKL orientations obtained for E fields of opposite direction.

Figure 3(a) shows the average SKL rotation angle as a function of $\mu_0 H$ oscillation number for several E fields. Three salient results arise from the analysis. First, for the explored E -field range, the rotations span a giant range of $\sim 25^\circ$. Second, the rotations are asymmetric with the E field, with larger rotations achieved for negative E fields. Third, at each E field, the rotation angle saturates at a large oscillation number. To extract quantitative information, we fitted the simple relaxation model $\Phi(n, E) = \Phi_0(E) \{1 - \exp[-n/\tau(E)]\}$ to the data at each E field. Here, $\Phi(n, E)$ is the average SKL rotation angle relative to 0° (with $\mathbf{q}_{\text{SKL}} \parallel [001]$), and n is the number of $\mu_0 H$ oscillations. $\Phi_0(E)$ is the saturation rotation angle, and $\tau(E)$ a relaxation constant. From the fits to each curve seen in Fig. 3(a), we obtain the E -field-dependence of both $\tau(E)$ [Fig. 3(a), inset] and $\Phi_0(E)$ [Fig. 3(b)]. Preliminary data show $\tau(E)$ to depend strongly on $\Delta\mu_0 H$, and weakly on f for the low frequency range

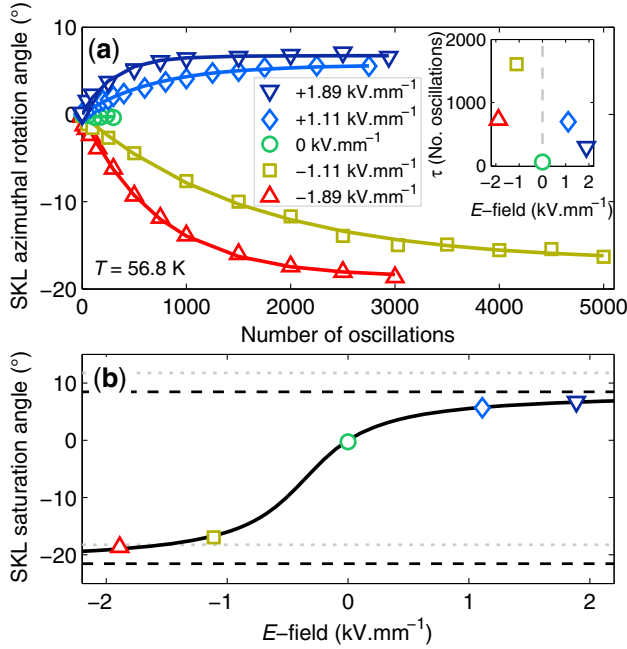


FIG. 3 (color online). (a) The average SKL rotation angle as a function of both $\mu_0 H$ oscillation number and E field. At each data point, the oscillations were stopped and the SANS measurement done in a static $\mu_0 H = 16$ mT. A negative (positive) angle corresponds to a clockwise (counterclockwise) rotation of \mathbf{q}_{SKL} as seen in Fig. 2. Solid lines are fits using the relaxation model described in the text. From the fits, we obtain the E -field-dependence of $\tau(E)$ (inset), and the rotation saturation angle shown in (b). In (b), the solid black line is a fit of the data as described in the text. The fit parameters define the range of possible SKL orientations that lie between the dashed black lines. Dotted gray lines indicate the range of orientations expected directly from the theory.

0.02–0.50 Hz. Overall, our approach gives novel microscopic insight into the quasidynamic response of the SKL orientation.

Next, we consider unexpected effects that could explain our observations. First, with $E = 0$, various T - and $\mu_0 H$ -dependent measurements show just the single SKL orientation with $\mathbf{q}_{\text{SKL}} \parallel [001]$ to exist in the explored portion of the SKL phase [Fig. 1(a)]. No evidence is found in our sample for a $\mu_0 H$ - and/or T -driven SKL realignment within the SKL phase like that reported in Ref. [34], not even after applying $\mu_0 H$ oscillations. The reason for such a difference in observations is unclear, though it may reflect slight variations in the microscopic properties between samples. Second, when oscillating $\mu_0 H$ and obtaining the curves shown in Fig. 3(a), we chose our experimental conditions so as to never cross the SKL phase boundary. This was done to avoid any effect due to E -field poling which, as shown previously, may influence the SKL orientation [33]. Third, any residual leakage currents under applied E fields were always $\lesssim 10^{-2} \text{ A}\cdot\text{m}^{-2}$, and insufficient to induce Skyrmion motion. Fourth, our experiments were designed

for minimized gradients across the sample. With $E = 0$, no rotation was detected at a nominally constant sample T . This indicates that control mechanisms reliant solely on a thermal gradient can be discounted [20,35]. A persistent SKL rotation could be imagined under a spatial E -field gradient [36], though this is inconsistent with the observed saturation of the SKL orientation.

Instead, we develop an analytic model to show that an intrinsic ME effect lies behind the rotations. We consider a spin Hamiltonian \mathcal{H} that approximates the full microscopic Hamiltonian for Cu_2OSeO_3 by a simplified one which contains a single effective spin \mathbf{S} per cubic unit cell [31,36,37]. The leading term in \mathcal{H} is $\mathcal{H}_{\text{HDM}} = J(\nabla\mathbf{S})^2 + D\mathbf{S} \cdot (\nabla \times \mathbf{S}) - \mathbf{h} \cdot \mathbf{S}$, where J , D are the coefficients of the Heisenberg and DM (HDM) interactions, respectively, and \mathbf{h} is the magnetic field. For convenience, the natural coordinate system is rotated so that the new \hat{y} axis coincides with $[001]$ in the original frame, and the new \hat{z} axis coincides with $[1\bar{1}0]$, which is parallel to $\mu_0 H$. In the absence of \mathbf{h} , the competition between the Heisenberg and DM interactions leads to a helical ground state with spin configuration $\mathbf{S}(\mathbf{r}) = \mathbf{S}(\mathbf{q})e^{i\mathbf{q}\cdot\mathbf{r}} + \mathbf{S}(-\mathbf{q})e^{-i\mathbf{q}\cdot\mathbf{r}}$, and where $\mathbf{S}(\mathbf{q}) = 1/\sqrt{2}(-i\hat{q}^y, i\hat{q}^x, 1)$ is the Fourier amplitude of the helix at propagation vector \mathbf{q} . At finite \mathbf{h} , the SKL can be stabilized, and the spin configuration can be written as a superposition of three proper helices [1]

$$\mathbf{S}(\mathbf{r}) = m_H \sum_{i=1}^3 (\mathbf{S}(\mathbf{q}_i)e^{i\mathbf{q}_i\cdot\mathbf{r}} + \mathbf{S}(-\mathbf{q}_i)e^{-i\mathbf{q}_i\cdot\mathbf{r}}) + m_F \hat{z}. \quad (1)$$

Here, propagation vectors \mathbf{q}_i ($i = 1, 2, 3$) lie in the \hat{x} - \hat{y} plane, and have azimuthal angles of ϕ , $\phi + 2\pi/3$, and $\phi - 2\pi/3$, respectively. The angle ϕ , thus, defines the SKL orientation. m_H and m_F are the components of the helices and the net magnetization, respectively. They satisfy the constraint $1 = \langle S^2(\mathbf{r}) \rangle = 6m_H^2 + m_F^2$, so that the spins in the lattice all have unit length on average.

Next, we examine the magnetocrystalline anisotropy term, \mathcal{H}_A which is constructed for the cubic lattice using a symmetry analysis that employs Neumann's principle (see the Supplemental Material [31]). Substitution of Eq. (1) into each of the second- and fourth-order spin anisotropy terms yield constants independent of ϕ . A ϕ -dependent energy is obtained, however, from the sixth-order term

$$\mathcal{E}_A^{(6)} = B(5/512)m_H^6 \cos(6\phi), \quad (2)$$

where B represents the amplitude of sixth-order spin anisotropy. Minimizing $\mathcal{E}_A^{(6)}$ yields solutions $\phi = 0$ when $B < 0$, and $\phi = \pi/6$ when $B > 0$. For $E = 0$, we observe that the SKL has a propagation vector parallel to $[001]$. This direction corresponds to the \hat{y} axis in the rotated model frame, so $\phi = \pi/6$. Therefore, $B > 0$ ensures the

correct minimization of $\mathcal{E}_A^{(6)}$ that is consistent with our experiments, though note that the following theory is generally applicable for either sign of B .

For finite electric field, E a ME coupling term, \mathcal{H}_{ME} needs to be included in \mathcal{H} . In the rotated coordinate frame, $\mathcal{H}_{\text{ME}} = \alpha E(S_x^2 + \sqrt{2}S_x S_y - S_z^2)/2$, where α represents the strength of the ME coupling. To zeroth order, substitution of Eq. (1) into \mathcal{H}_{ME} again yields merely a constant that is ϕ independent. Therefore, we have to consider higher-order effects in E .

To this end, the first-order perturbation in E is employed (see the Supplemental Material [31]). We find that the influence of E is to distort the SKL, since $\mathbf{S}(\mathbf{q})$ for each helix acquires components of an antiscrew helix with $\mathbf{S}'(\mathbf{q}) = 1/\sqrt{2}(i\hat{q}^y, -i\hat{q}^x, 1)$, and a third orthogonal spiral with $\mathbf{S}''(\mathbf{q}) = (\hat{q}^x, \hat{q}^y, 0)$ [31]. The perturbation is treated up to first-order in $\beta(E) = \alpha E/Dk_0$, where $k_0 = D/2J$ is the length of the SKL propagation vector. Using estimates $J = 50$ K, $D = 3$ K, and $\alpha = 10^{-33}$ J/(V/m) [28], $\beta(E) \sim 10^{-3}$ for $E = 1$ kV · mm⁻¹. Thus, treating the perturbation to first-order is well justified, and the relative changes in the overall Fourier components are small. For $|\beta(E)| = 0.001$, we calculate $|\mathbf{S}(\mathbf{q})|^2$, which is proportional to the measured SANS intensity at wave vector \mathbf{q} , to vary by just $\sim 10^{-3}\%$ for each SKL propagation vector. This challenges a reliable detection of the distortion by SANS.

Nevertheless, on substitution of the distorted Skyrmion configuration into \mathcal{H}_A , a ϕ dependence that can influence the SKL alignment now appears at fourth-order in the spin operator. Its energy is given by

$$\mathcal{E}_A^{(4')} = \frac{810\sqrt{2}\alpha m_H^4 E}{512Dk_0} A \left(\sin 6\phi + \frac{\sqrt{2}}{4} \cos 6\phi \right). \quad (3)$$

Here, A represents the amplitude of fourth-order anisotropy. Combining $\mathcal{E}_A^{(4')}$ with the unperturbed energy $\mathcal{E}_A^{(6)}$ gives an overall anisotropy energy that describes a balance between magnetocrystalline and E -field-induced anisotropies

$$\mathcal{E}_A = \frac{3m_H^4}{512} \left[\left(\xi + \frac{\sqrt{2}}{4} \lambda \right)^2 + \lambda^2 \right]^{1/2} \cos 6(\phi + \theta_E), \quad (4)$$

where $\lambda = 270\sqrt{2}A\alpha E/Dk_0$ and $\xi = 5m_H^2 B$. Equation (4) shows that, under finite E , the ground state minimum is rotated away from the $E = 0$ case by an azimuthal angle θ_E

$$\theta_E = \frac{1}{6} \arctan \left(\frac{\lambda}{\xi + C\lambda} \right), \quad (5)$$

where C is expected to be $\sqrt{2}/4$ (see the Supplemental Material [31]). In the limit $B = 0$, evaluation of Eq. (5) yields two limiting orientations that are separated by 30° —see the dotted gray lines in Fig. 3(b). The size of

asymmetry of these orientations around 0° is determined by coefficient C .

Figure 3(b) shows that the data of rotation saturation angle versus the E field, indeed, follow the expected tangential form of θ_E [Eq. (5)]. However, the observed values span a range that is shifted slightly compared with that expected. A full description of the data is achieved upon fitting with the recast form of Eq. (5): $\theta_E = \frac{1}{6} \arctan[1/(K/E + C)]$, where $K = (5m_H^2 Dk_0)/(270\sqrt{2}\alpha)(B/A)$. From the fit—the solid black line in Fig. 3(b)—we obtain $K = 0.71(1)$ kV · mm⁻¹ and $C = 0.82(1)$. Using the value of K , and equating $m_H = 1.1\mu_B$ /unit cell as estimated from the data in Ref. [28], we find $B/A \sim 10^{-3}$, which is self-consistent with our energy considerations. The fitted value for C is larger than $\sqrt{2}/4 \approx 0.35$ expected from the theory. This discrepancy could be resolved by including further higher-order corrections, such as those obtained from a perturbative treatment of the sixth-order spin anisotropy. Such corrections would leave the general form of Eq. (5) unchanged, yet modify the expected value of C . Nevertheless, the robustness of the approach is seen when evaluating the model for other $\mu_0 H$ and E -field configurations. Importantly, no rotations are expected from our theory for the $E||\mu_0 H||[111]$ geometry (see the Supplemental Material [31]), which is consistent with our SANS measurements (data not shown).

By both experiment and theory, we have shown that ME coupling allows control over the preferred SKL orientation in Cu₂OSeO₃. This is achieved without requiring a macroscopic spatial gradient across the sample, such as the T gradients applied previously [5,16,20]. Nonetheless, we can not rule out that any finite spatial gradients, be they in T or in E field [36], play a role in the rotational dynamics. Indeed, a full parametrization of the insulating SKL dynamics in this model system await further studies. Instead, in our experiments, we have explored a regime where Skyrmion pinning dominates over the rotational torque, since simply applying an E field is insufficient to drive the rotation of the equilibrium SKL. Only by driving the system out of equilibrium with $\mu_0 H$ oscillations is the pinning overcome, and the rotation initiated. Concomitantly, it can be expected that when the $\mu_0 H$ oscillations are stopped, pinning preserves an achieved SKL orientation, even after further removal of the E field. This phenomenon, which should also exist at room temperature, could be exploited as an information storage scheme.

To summarize our study, we have shown that, by means of ME coupling, E fields can control SKL rotations in a bulk single crystal of Cu₂OSeO₃. With supporting calculations, we demonstrate that the rotations arise due to an E -field-induced Skyrmion distortion. Our study presents a new Skyrmion manipulation concept which, unlike all other reported approaches, does not require STTs due to currents of either conduction electrons or magnons.

Financial support from the Swiss National Science Foundation, the European Research Council grant CONQUEST, MaNEP, and the Indo-Swiss Joint Research Project program is gratefully acknowledged. We thank D. Mazzone and U. Gasser for support with the neutron experiments performed at the Swiss Spallation Neutron Source (SINQ), Paul Scherrer Institut, Switzerland. I.Ž. acknowledges financial support from the Croatian Science Foundation, Project No. 02.05/33. J.Z. is supported by the Theoretical Interdisciplinary Physics and Astrophysics Center and by the U.S. Department of Energy, Office of Basic Energy Sciences, Division of Materials Sciences and Engineering under Grant No. DEFG02-08ER46544.

*jonathan.white@psi.ch
†jiadongzang@gmail.com
‡henrik.ronnnow@epfl.ch

- [1] S. Mühlbauer, B. Binz, F. Jonietz, C. Pfleiderer, A. Rosch, A. Neubauer, R. Georgii, and P. Böni, *Science* **323**, 915 (2009).
- [2] N. Nagaosa and Y. Tokura, *Nat. Nanotechnol.* **8**, 899 (2013).
- [3] B. Lebech, J. Bernhard, and T. Freltoft, *J. Phys. Condens. Matter* **1**, 6105 (1989).
- [4] X. Z. Yu, N. Kanazawa, Y. Onose, K. Kimoto, W. Z. Zhang, Y. Matsui, and Y. Tokura, *Nat. Mater.* **10**, 106 (2011).
- [5] F. Jonietz, S. Mühlbauer, C. Pfleiderer, A. Neubauer, W. Münzer, A. Bauer, T. Adams, R. Georgii, P. Böni, R. A. Duine, K. Everschor, M. Garst, and A. Rosch, *Science* **330**, 1648 (2010).
- [6] X. Z. Yu, N. Kanazawa, W. Z. Zhang, T. Nagai, T. Hara, K. Kimoto, Y. Matsui, Y. Onose, and Y. Tokura, *Nat. Commun.* **3**, 988 (2012).
- [7] A. Fert, V. Cros, and J. Sampaio, *Nat. Nanotechnol.* **8**, 152 (2013).
- [8] A. Neubauer, C. Pfleiderer, B. Binz, A. Rosch, R. Ritz, P. G. Niklowitz, and P. Böni, *Phys. Rev. Lett.* **102**, 186602 (2009).
- [9] S. V. Grigoriev, V. A. Dyadkin, E. V. Moskvina, D. Lamago, T. Wolf, H. Eckerlebe, and S. V. Maleyev, *Phys. Rev. B* **79**, 144417 (2009).
- [10] K. Shibata, X. Z. Yu, T. Hara, D. Morikawa, N. Kanazawa, K. Kimoto, S. Ishiwata, Y. Matsui, and Y. Tokura, *Nat. Nanotechnol.* **8**, 723 (2013).
- [11] W. Münzer, A. Neubauer, T. Adams, S. Mühlbauer, C. Franz, F. Jonietz, R. Georgii, P. Böni, B. Pedersen, M. Schmidt, A. Rosch, and C. Pfleiderer, *Phys. Rev. B* **81**, 041203(R) (2010).
- [12] S. Seki, X. Z. Yu, S. Ishiwata, and Y. Tokura, *Science* **336**, 198 (2012).
- [13] T. Adams, A. Chacon, M. Wagner, A. Bauer, G. Brandl, B. Pedersen, H. Berger, P. Lemmens, and C. Pfleiderer, *Phys. Rev. Lett.* **108**, 237204 (2012).
- [14] K. Everschor, M. Garst, R. A. Duine, and A. Rosch, *Phys. Rev. B* **84**, 064401 (2011).
- [15] J. Zang, M. Mostovoy, J. H. Han, and N. Nagaosa, *Phys. Rev. Lett.* **107**, 136804 (2011).
- [16] K. Everschor, M. Garst, B. Binz, F. Jonietz, S. Mühlbauer, C. Pfleiderer, and A. Rosch, *Phys. Rev. B* **86**, 054432 (2012).
- [17] T. Schultz, R. Ritz, A. Bauer, M. Halder, M. Wagner, C. Franz, C. Pfleiderer, K. Everschor, M. Garst, and A. Rosch, *Nat. Phys.* **8**, 301 (2012).
- [18] S.-Z. Lin, C. Reichhardt, C. D. Batista, and A. Saxena, *Phys. Rev. B* **87**, 214419 (2013).
- [19] J. Iwasaki, M. Mochizuki, and N. Nagaosa, *Nat. Commun.* **4**, 1463 (2013).
- [20] M. Mochizuki, X. Z. Yu, S. Seki, N. Kanazawa, W. Koshibae, J. Zang, M. Mostovoy, Y. Tokura, and N. Nagaosa, *Nat. Mater.* **13**, 241 (2014).
- [21] J.-W. G. Bos, C. V. Colin, and T. T. M. Palstra, *Phys. Rev. B* **78**, 094416 (2008).
- [22] M. Belesi, I. Rousochatzakis, H. C. Wu, H. Berger, I. V. Shvets, F. Mila, and J.-P. Ansermet, *Phys. Rev. B* **82**, 094422 (2010).
- [23] M. Belesi, I. Rousochatzakis, M. Abid, U. K. Rößler, H. Berger, and J.-P. Ansermet, *Phys. Rev. B* **85**, 224413 (2012).
- [24] S. Seki, S. Ishiwata, and Y. Tokura, *Phys. Rev. B* **86**, 060403 (R) (2012).
- [25] A. Maisuradze, A. Shengelaya, H. Berger, D. M. Djokić, and H. Keller, *Phys. Rev. Lett.* **108**, 247211 (2012).
- [26] I. Živković, D. Pajić, T. Ivek, and H. Berger, *Phys. Rev. B* **85**, 224402 (2012).
- [27] J. H. Yang, Z. L. Li, X. Z. Lu, M.-H. Whangbo, S.-H. Wei, X. G. Gong, and H. J. Xiang, *Phys. Rev. Lett.* **109**, 107203 (2012).
- [28] A. A. Omrani, J. S. White, K. Prša, I. Živković, H. Berger, A. Magrez, Y.-H. Liu, J. H. Han, and H. M. Rønnow, *Phys. Rev. B* **89**, 064406 (2014).
- [29] C. Jia, S. Onoda, N. Nagaosa, and J. H. Han, *Phys. Rev. B* **76**, 144424 (2007).
- [30] T. Arima, *J. Phys. Soc. Jpn.* **76**, 073702 (2007).
- [31] See the Supplemental Material at <http://link.aps.org/supplemental/10.1103/PhysRevLett.113.107203>, which includes Refs. [1,22,32], for further details of both the experimental techniques and the theoretical model developed to explain the SKL rotations.
- [32] M. Bartkowiak, J. S. White, H. M. Rønnow, and K. Prša, *Rev. Sci. Instrum.* **85**, 026112 (2014).
- [33] J. S. White, I. Levatić, A. A. Omrani, N. Egetenmeyer, K. Prša, I. Živković, J. L. Gavilano, J. Kohlbrecher, M. Bartkowiak, H. Berger, and H. M. Rønnow, *J. Phys. Condens. Matter* **24**, 432201 (2012).
- [34] S. Seki, J.-H. Kim, D. S. Inosov, R. Georgii, B. Keimer, S. Ishiwata, and Y. Tokura, *Phys. Rev. B* **85**, 220406 (2012).
- [35] L. Kong and J. Zang, *Phys. Rev. Lett.* **111**, 067203 (2013).
- [36] Y.-H. Liu, Y.-Q. Li, and J. H. Han, *Phys. Rev. B* **87**, 100402 (2013).
- [37] S. D. Yi, S. Onoda, N. Nagaosa, and J. H. Han, *Phys. Rev. B* **80**, 054416 (2009).